



basic education

Department:
Basic Education
REPUBLIC OF SOUTH AFRICA

**NATIONAL
SENIOR CERTIFICATE**

GRADE 12

ENGINEERING GRAPHICS AND DESIGN P1

NOVEMBER 2023

MARKING GUIDELINES

MARKS: 100

**DEPARTMENT OF BASIC
EDUCATION**

PRIVATE BAG X695, PRETORIA 0001

2023 - 11 - 11

APPROVED MARKING GUIDELINE

PUBLIC EXAMINATION

These marking guidelines consist of 8 pages.

ANSWERS		
1	acearc@africa.com / ACEARC@AFRICA.COM	1
2	1 : 450	1
3	30/01/2023	1
4	QUALITY STREET	1
5	351	1
6	BRICK PAVING	1
7	3	1
8	SPEED HUMP	1
9	1 : 40	1
10	2500	1
11	GULLY	1
12	EVERGREEN TREE	1
13	ADJACENT BUILDING / STRUCTURE	1
14	EXISTING SEWER LINE	1
15	0,15	1
16	RED	1
17	SOUTH EAST / EAST-SOUTH-EAST / SE	2
18	1800 (1,8 m = 1)	2
19	See below	3
20		3
21		4
TOTAL		30

DEPARTMENT OF BASIC EDUCATION PRIVATE BAG X695, PRETORIA 0001	2023 - 11 - 11
	APPROVED MARKING GUIDELINE PUBLIC EXAMINATION

ANSWER 19
Show ALL calculations.
APPLYING CORRECT FORMULA ✓

$$P = AB + BC + CD + DE + EA$$

$$= 40 + 48 + 23,34 + 7,5 + 44,56$$

$$= 163,4 \text{ ✓ ANSWER IN METRES ✓}$$

ANSWER 20
Show ALL calculations.
APPLYING CORRECT FORMULA ✓

$$A = (10 \times 9,2) + (7,4 \times 4) + (6,2 \times 3,2)$$

$$= 92 + 29,6 + 19,84$$

$$= 141,44 \text{ m}^2 \text{ ✓ ANSWER IN SQUARE METRES ✓}$$

ANSWER 21
NOT FAOP = -1/2

(a)

(b)

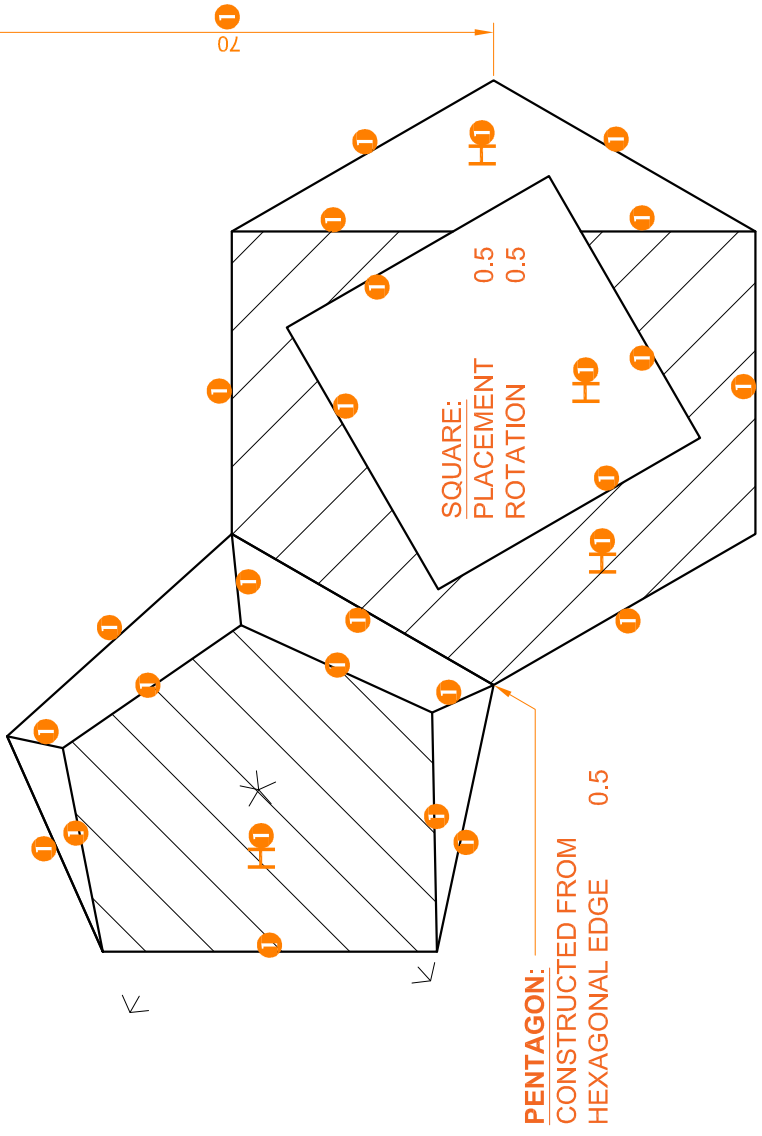
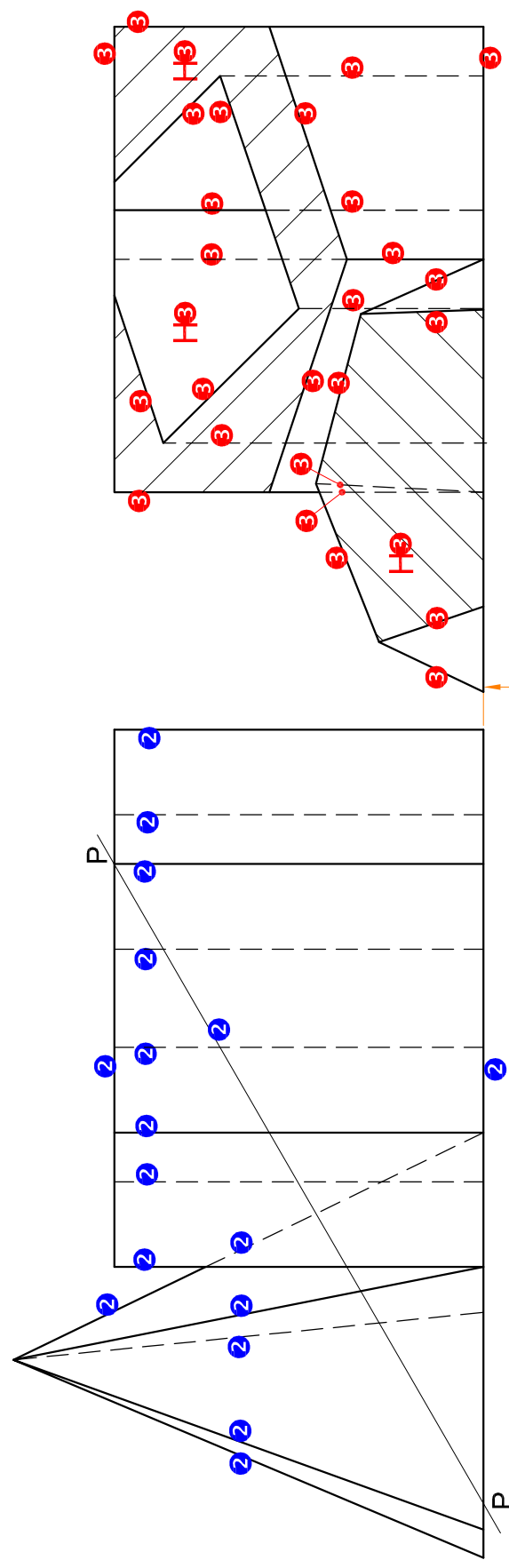
1 FREEHAND

PAPER 1 QUESTION 1
GRADE 12
NOVEMBER 2023
MARKING GUIDELINES

DEPARTMENT OF BASIC EDUCATION
 PRIVATE BAG X695, PRETORIA 0001
 2023 - 11 - 11
APPROVED MARKING GUIDELINE
PUBLIC EXAMINATION

ASSESSMENT CRITERIA	
1	SECTIONAL TOP VIEW 15 ½
2	FRONT VIEW 8 ½
3	SECTIONAL LEFT VIEW 14
TOTAL 38	

PAPER 1 QUESTION 2
 GRADE 12
 NOVEMBER 2023
 MARKING GUIDELINES

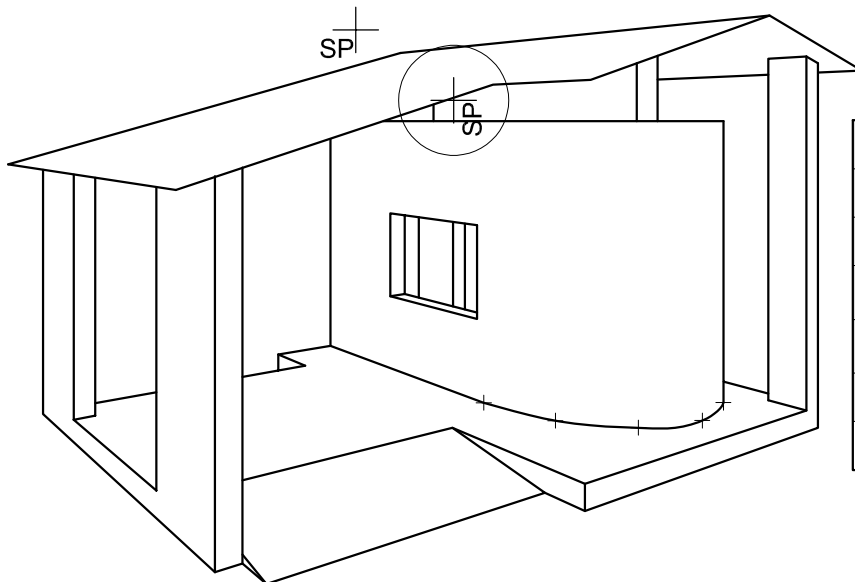
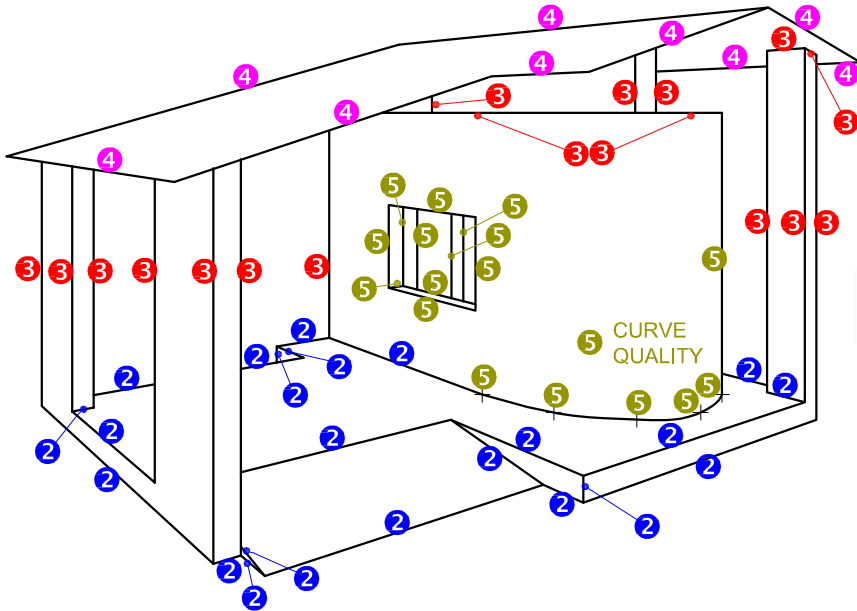
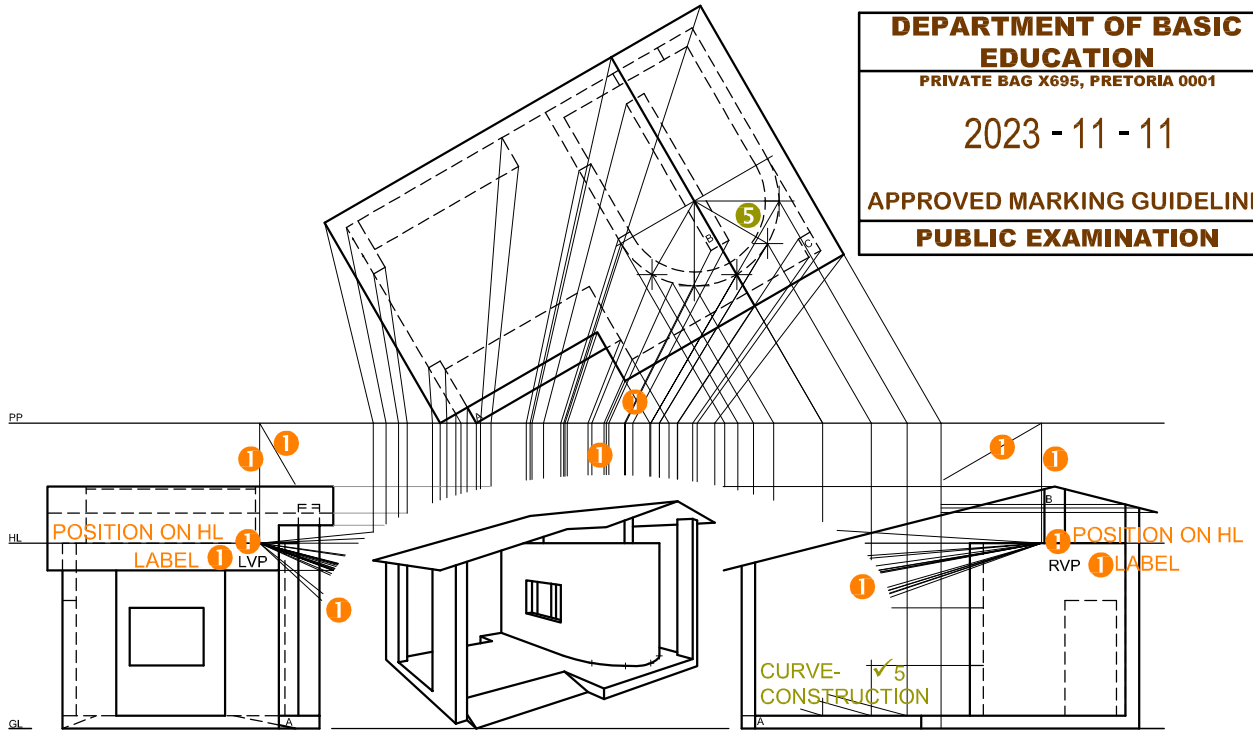


Handwritten marks:
 AB
 [Signature]
 [Signature]

DEPARTMENT OF BASIC EDUCATION
 PRIVATE BAG X695, PRETORIA 0001

2023 - 11 - 11

APPROVED MARKING GUIDELINE
PUBLIC EXAMINATION



ASSESSMENT CRITERIA		
1	CONSTRUCTION	6
2	FLOOR	11
3	WALLS	8 1/2
4	ROOF	4 1/2
5	WINDOWS + ARC	10
TOTAL		40

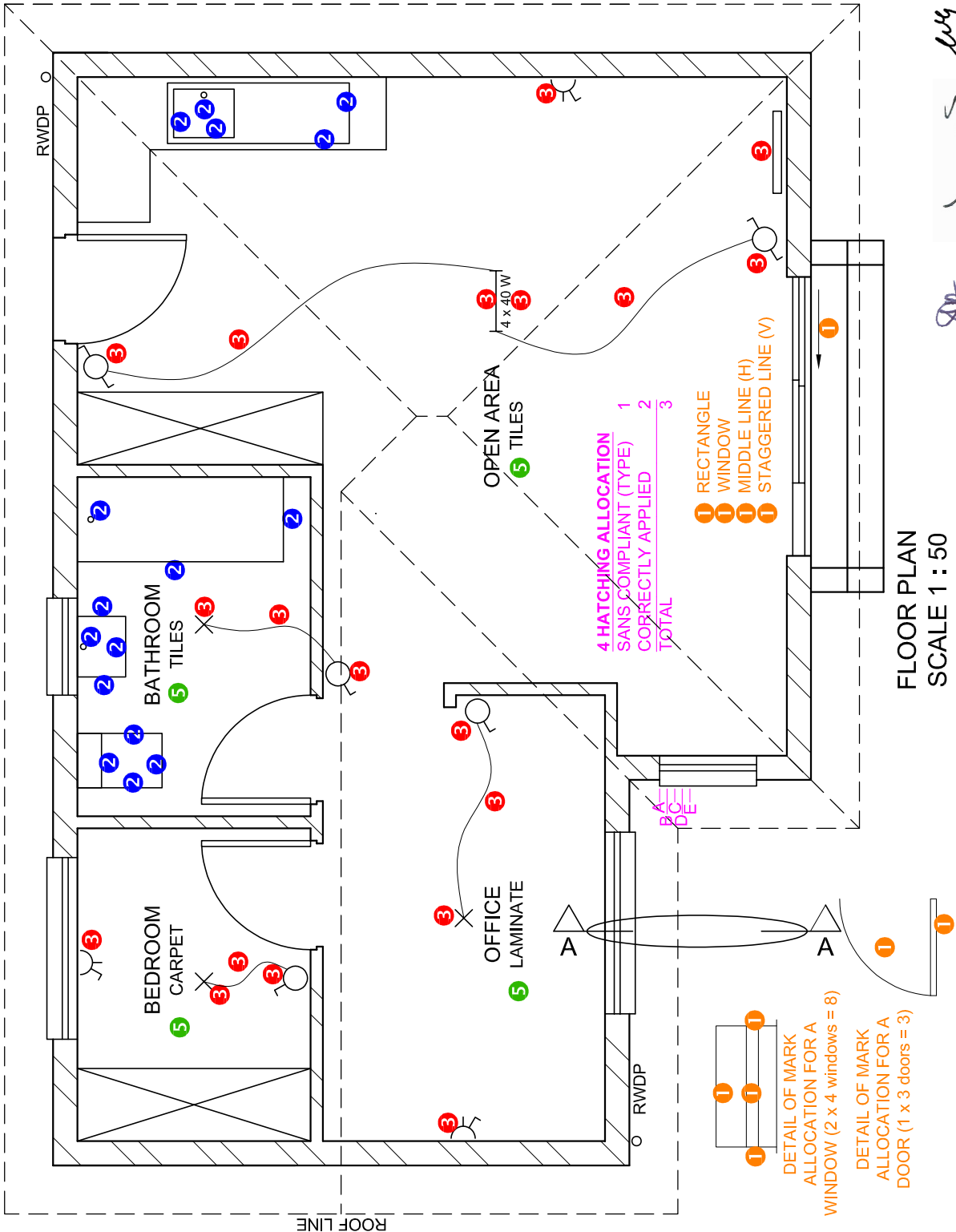
PAPER 1 QUESTION 3
 GRADE 12
 NOVEMBER 2023
 MARKING GUIDELINES

DEPARTMENT OF BASIC EDUCATION
 PRIVATE BAG X695, PRETORIA 0001
 2023 - 11 - 11
 APPROVED MARKING GUIDELINE
 PUBLIC EXAMINATION

AB

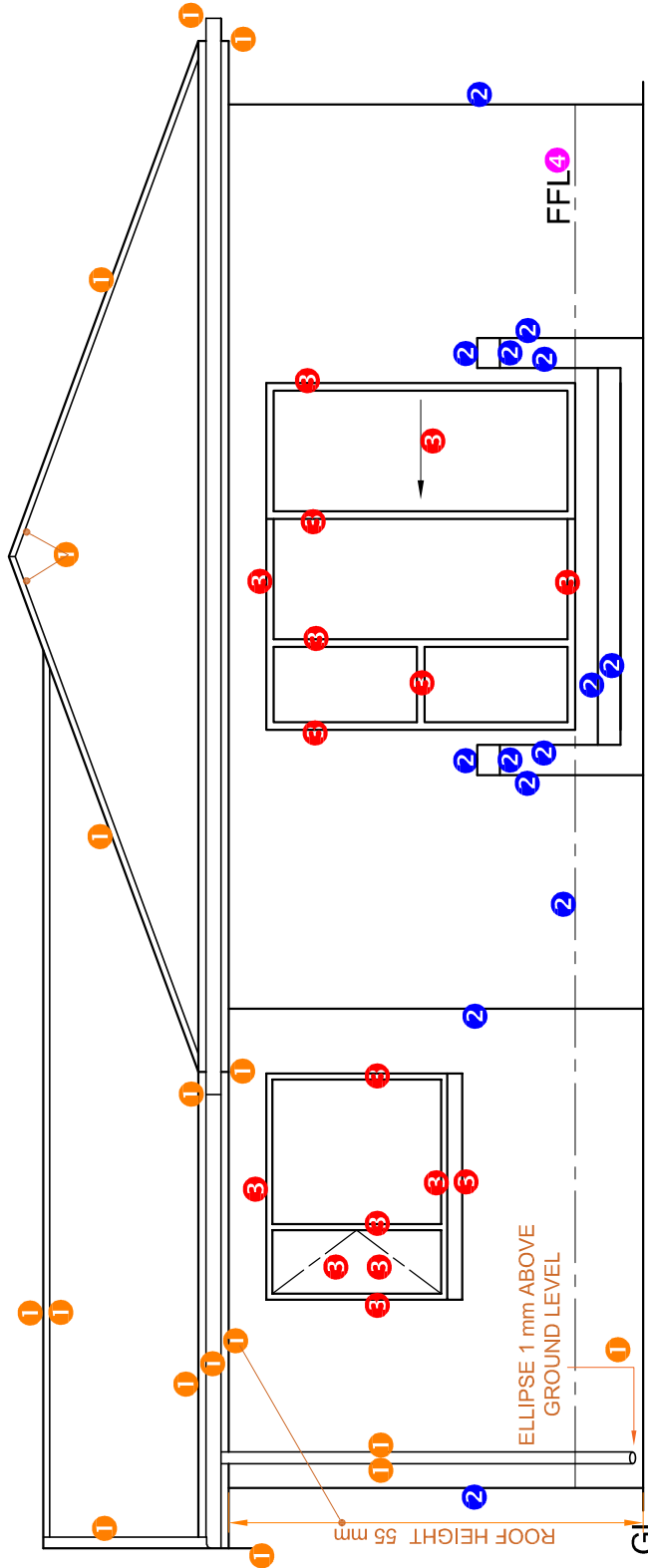
ASSESSMENT CRITERIA	
FLOOR PLAN	
1	DOORS + WINDOWS 13 1/2
2	FIXTURES 8
3	ELECTRICAL 9 1/2
4	HATCHING 3
5	LABELS 2
SUBTOTAL 36	

PAPER 1 QUESTION 4
 GRADE 12
 NOVEMBER 2023
 MARKING GUIDELINES



Handwritten signatures and initials.

AB

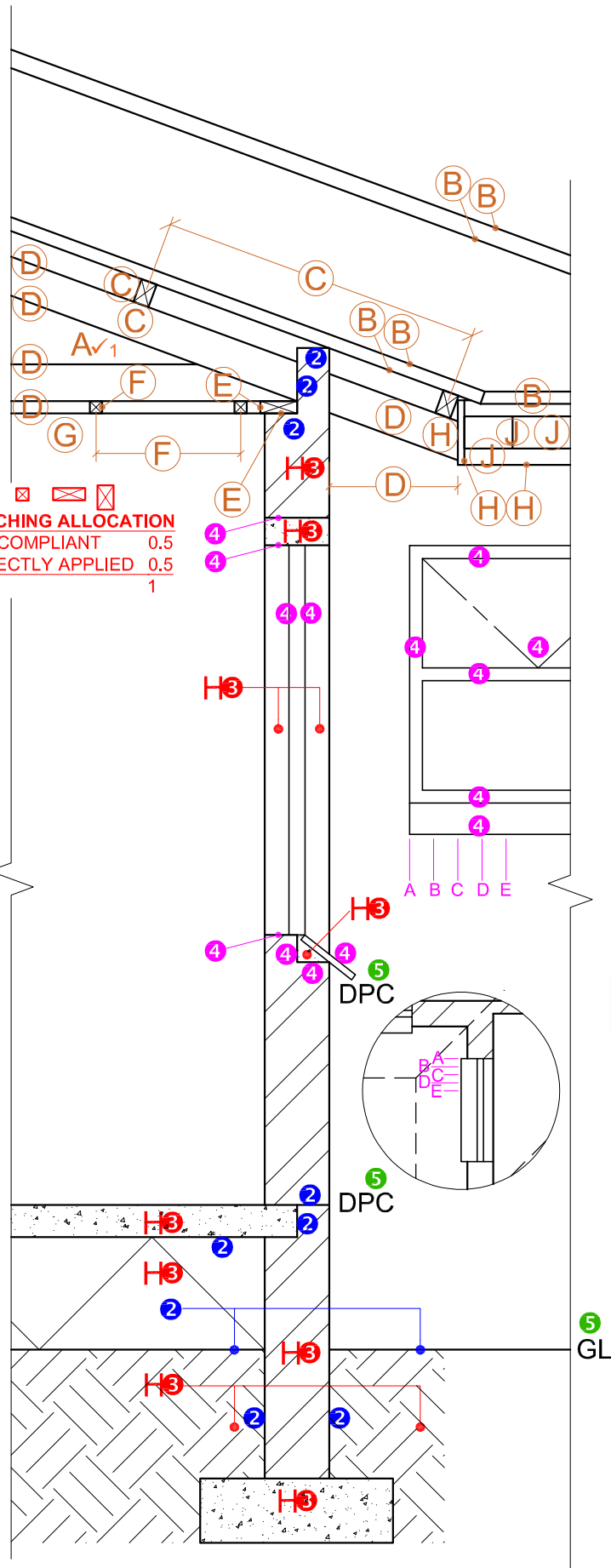


NORTH EAST ELEVATION

ASSESSMENT CRITERIA	
NORTH EAST ELEVATION	
1	ROOF + RWDP 8 1/2
2	WALLS + STEPS 7
3	DOOR + WINDOW 8
4	LABELS 1 1/2
SUBTOTAL	24

PAPER 1 QUESTION 4
GRADE 12
NOVEMBER 2023
MARKING GUIDELINES

DEPARTMENT OF BASIC EDUCATION
PRIVATE BAG X695, PRETORIA 0001
2023 - 11 - 11
APPROVED MARKING GUIDELINE
PUBLIC EXAMINATION




3. HATCHING ALLOCATION
 SANS COMPLIANT 0.5
 CORRECTLY APPLIED 0.5
 TOTAL 1

1. MARK ALLOCATION FOR ROOF

A: ROOF ANGLE	1
B: ROOF SHEET + R COVER	2.5
C: PURLIN + SPACING	1.5
D: TRUSS + OVERHANG	3
E: WALL PLATE	1
F: BRANDERING + SPACING	1
G: CEILING BOARD	0.5
H: FACIA	1.5
J: GUTTER	1.5
TOTAL	13.5

DEPARTMENT OF BASIC EDUCATION PRIVATE BAG X695, PRETORIA 0001 2023 - 11 - 11 APPROVED MARKING GUIDELINE PUBLIC EXAMINATION



ASSESSMENT CRITERIA		
DETAILED SECTION		
1	ROOF DETAIL	13 1/2
2	SLAB + WALL	4 1/2
3	HATCHING	5 1/2
4	WINDOWS	7
5	LABELS	1 1/2
SUBTOTAL		32

SECTION A-A
SCALE 1 : 20

PAPER 1 QUESTION 4
GRADE 12
NOVEMBER 2023
MARKING GUIDELINES