



basic education

Department:
Basic Education
REPUBLIC OF SOUTH AFRICA

SENIOR CERTIFICATE EXAMINATIONS/ NATIONAL SENIOR CERTIFICATE EXAMINATIONS

ENGINEERING GRAPHICS AND DESIGN P1

2019

MARKING GUIDELINES

MARKS: 100

These marking guidelines consist of 8 pages.

APPROVED

UMALUSI MODERATOR: S. DE BRUIN

DBE IM: J VAN LEEUWEN

DBE CE: W GOODCHILD

ANSWERS		
1	VANESSA	1
2	108	1
3	YG/-2018	1
4	6 m	1
5	1,2 m	1
6	3	1
7	4	1
8	2500	1
9	RED	1
10	INSPECTION CHAMBER	1
11	RIVER	1
12	CONCRETE WALL	1
13	GULLY	1
14	CONTOUR HEIGHT/HEIGHT ABOVE SEA LEVEL	1
15	WATT/ELECTRICAL METER	1
16	12 m	1
17	SOUTH-WEST	2
18	68 m (formula 1, answer 1, decimal correct 1)	3
19	700 m ² (formula 1, answer 1, metre ² 1)	3
20	See below	6
TOTAL		30

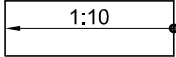

ANSWER 18
Show ALL calculations.

$L+L+L+L+L+L$ ✓
 $=9+21+4+4+5+25$
 $= 68 \text{ m}$ ✓✓

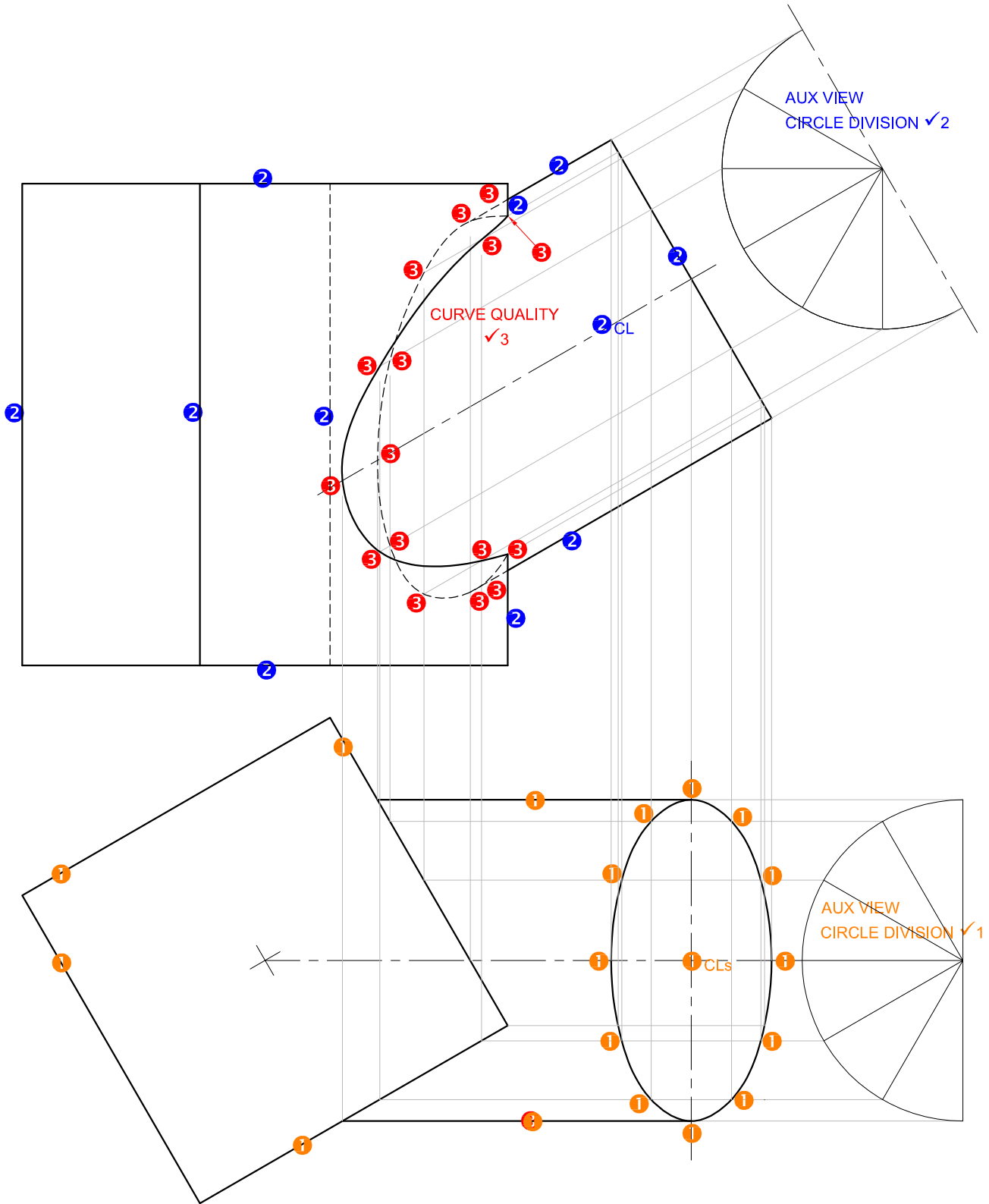
ANSWER 19
Show ALL calculations.

$(L \times B) + \frac{1}{2}(B \times H)$ ✓
 $= (20 \times 30) + \frac{1}{2}(20 \times 10)$
 $= 600 + 100$
 $= 700 \text{ m}^2$ ✓✓

ANSWER 20

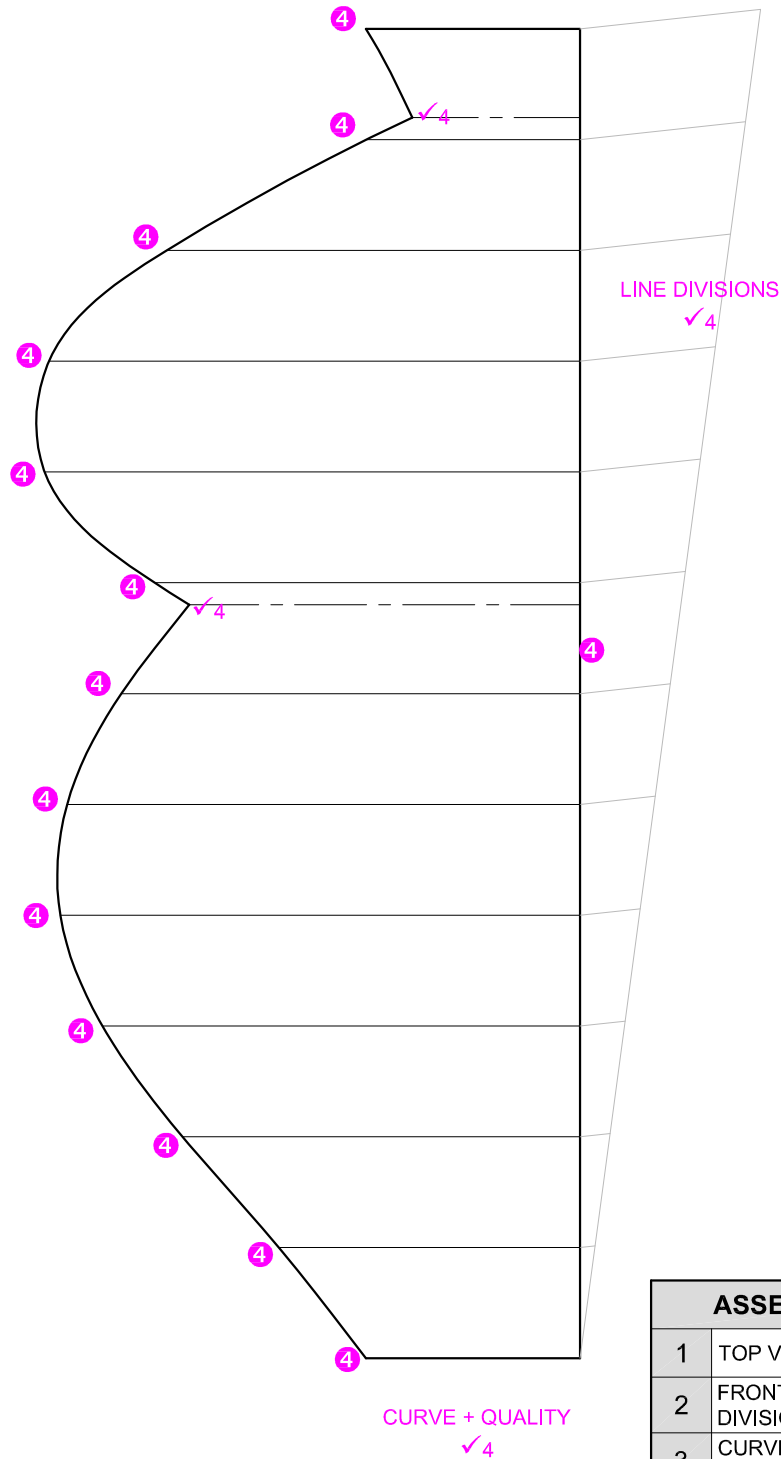
	ANSWER 20 MARK ALLOCATION
FREEHAND	FREEHAND 1/2
<p>a. </p>	<p>1. RAMP</p> <ul style="list-style-type: none"> - DOT 1/2 - ARROW 1/2 - GRADIENT (1 : 10) 1/2 - DIRECTION 1
<p>b. </p>	<p>2. SLIDING DOOR</p> <ul style="list-style-type: none"> - RECTANGLE 1 - MIDDLE LINE 1/2 - 2 OFFSET LINES 1 - ARROW 1/2
	<p>TOTAL 6</p>

APPROVED
PAPER 1 QUESTION 1
GRADE 12
SC/NSC 2019
MARKING GUIDELINES



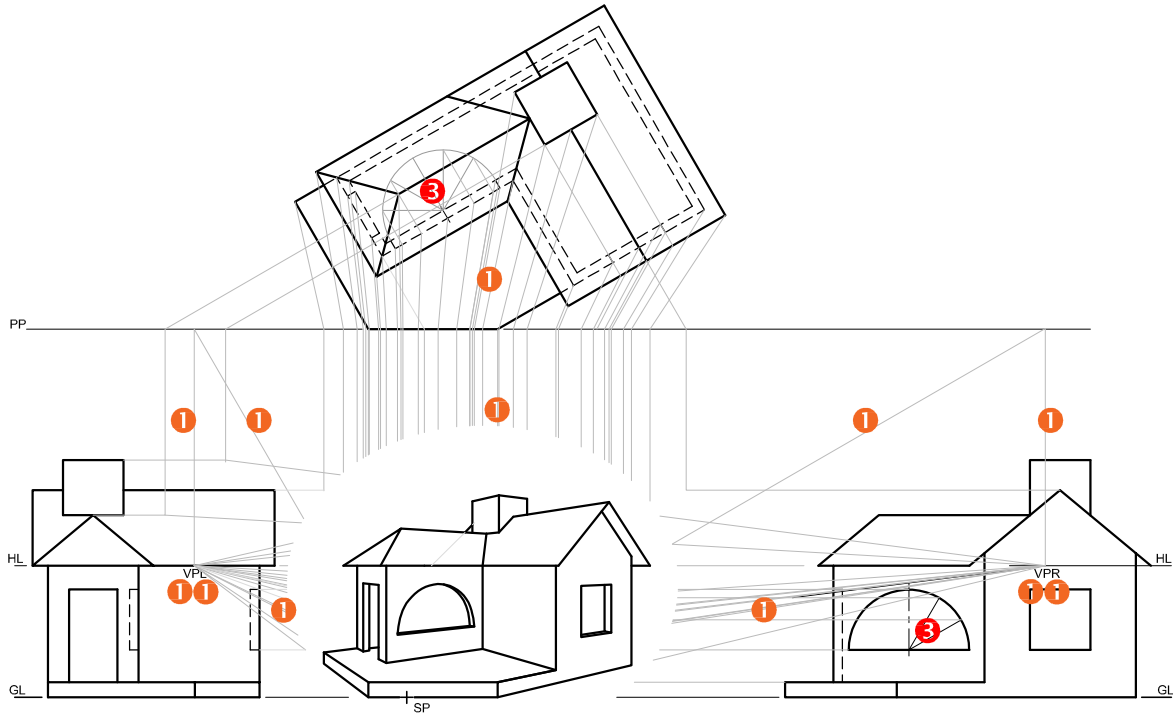
NOTE:
THE DEVELOPMENT AND
ASSESSMENT TABLE IS ON
PAGE 4

APPROVED
PAPER 1 QUESTION 2
GRADE 12
SC/NSC 2019
MARKING GUIDELINES

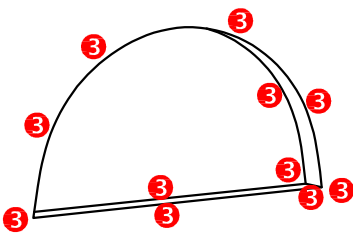


ASSESSMENT CRITERIA		
1	TOP VIEW	10 $\frac{1}{2}$
2	FRONT VIEW + CIRCLE DIVISION	6 $\frac{1}{2}$
3	CURVE OF INTERPENETRATION	9
4	DEVELOPMENT	11
TOTAL		37

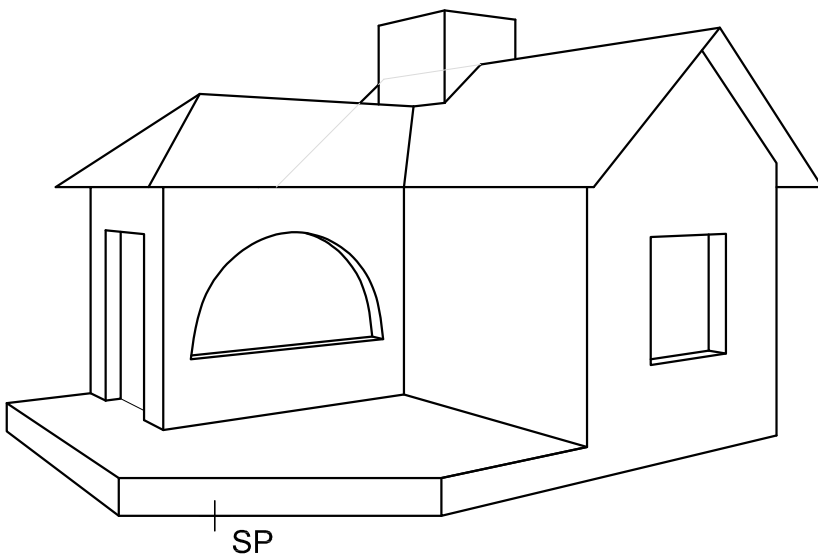
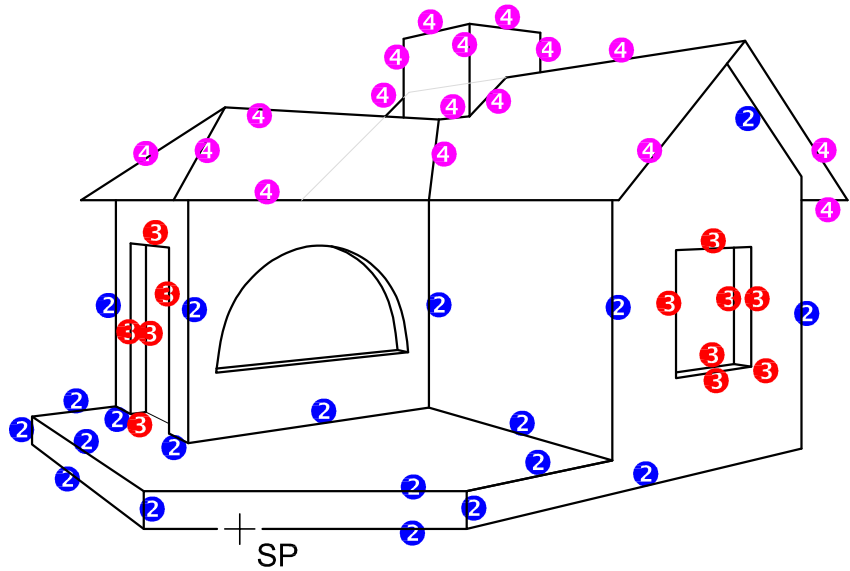
APPROVED
 PAPER 1 QUESTION 2
 GRADE 12
 SC/NSC 2019
 MARKING GUIDELINES



3 ✓ CURVE QUALITY

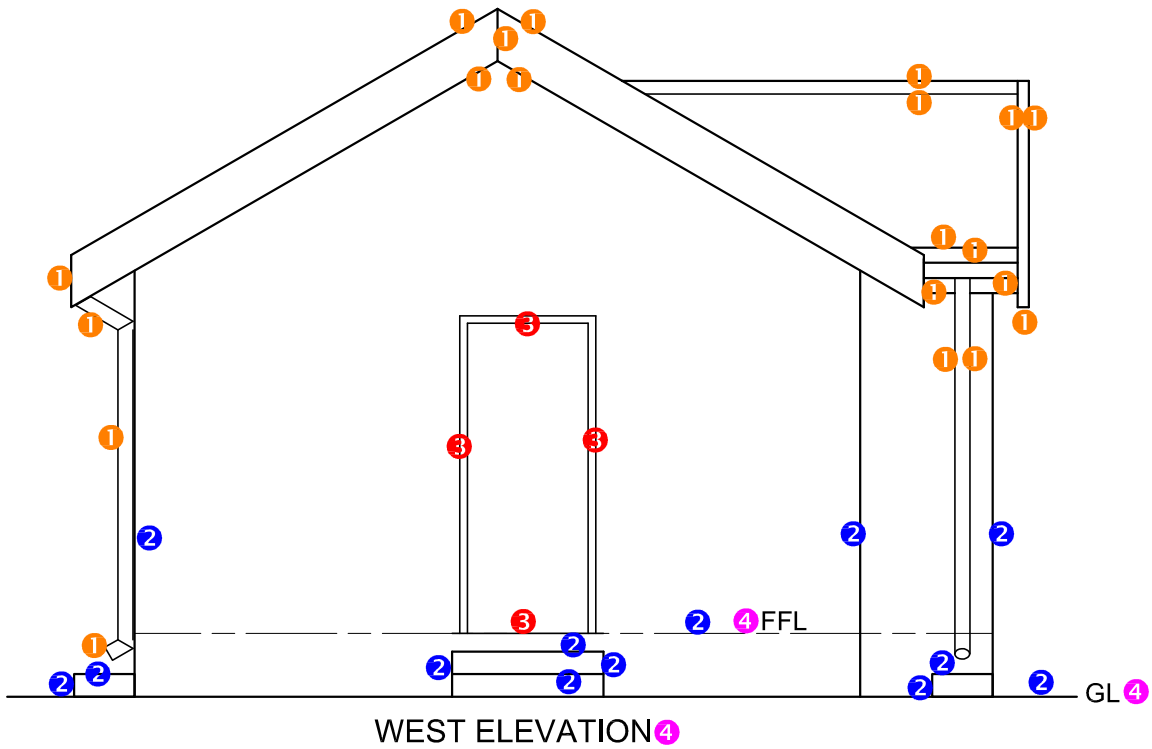


DETAILS OF THE
MARK ALLOCATION
FOR THE ARC



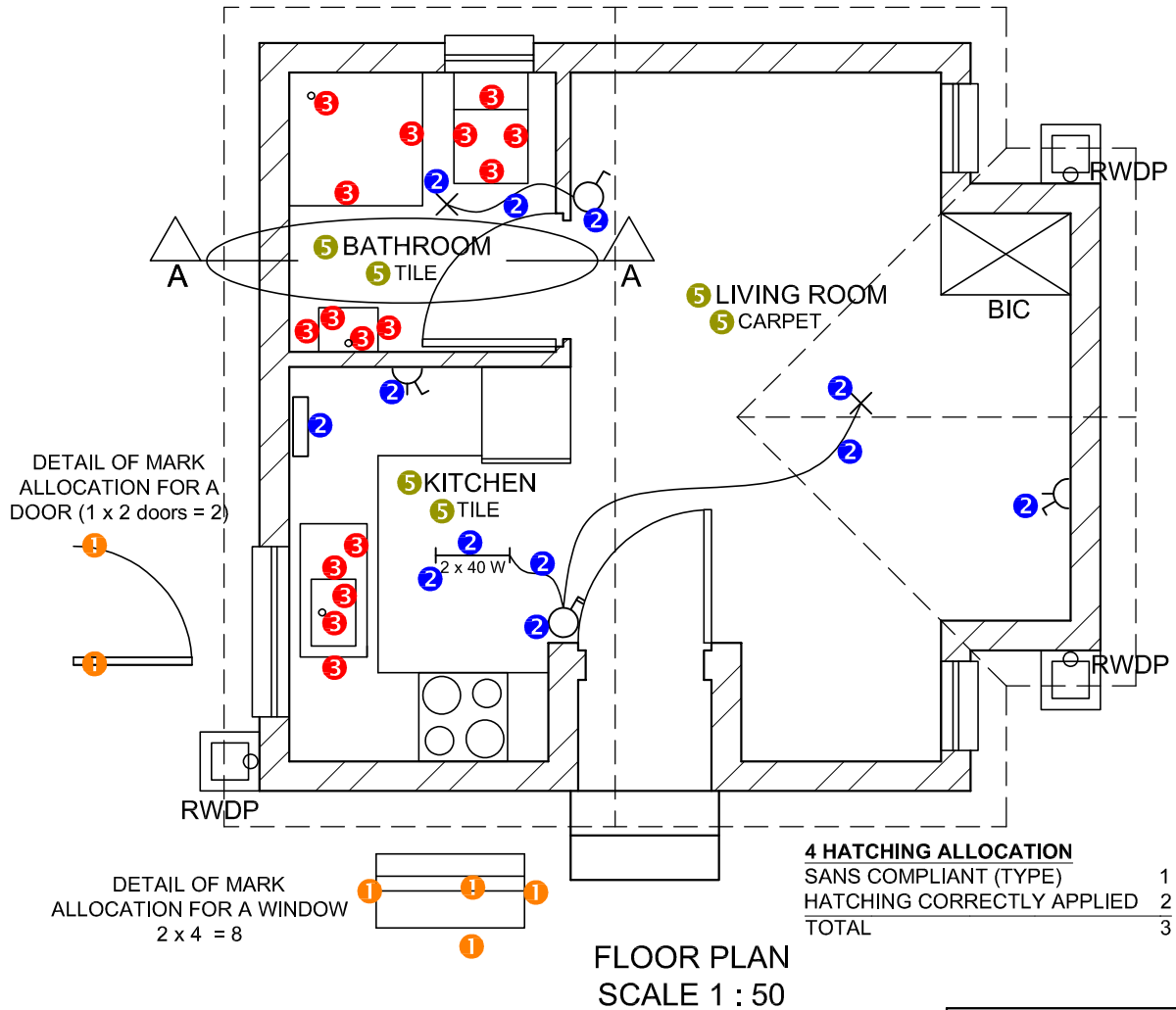
ASSESSMENT CRITERIA		
1	CONSTRUCTION	6
2	FLOOR AND WALLS	10
3	DOOR AND WINDOWS	13 1/2
4	ROOF	8 1/2
TOTAL		38

APPROVED
PAPER 1 QUESTION 3
GRADE 12
SC/NSC 2019
MARKING GUIDELINES



ASSESSMENT CRITERIA		
WEST ELEVATION		
1	ROOF + RWDP	10
2	WALLS + FFL	6 1/2
3	DOOR	2
4	LABELS	1 1/2
SUBTOTAL		20

APPROVED
 PAPER 1 QUESTION 4
 GRADE 12
 SC/NSC 2019
 MARKING GUIDELINES

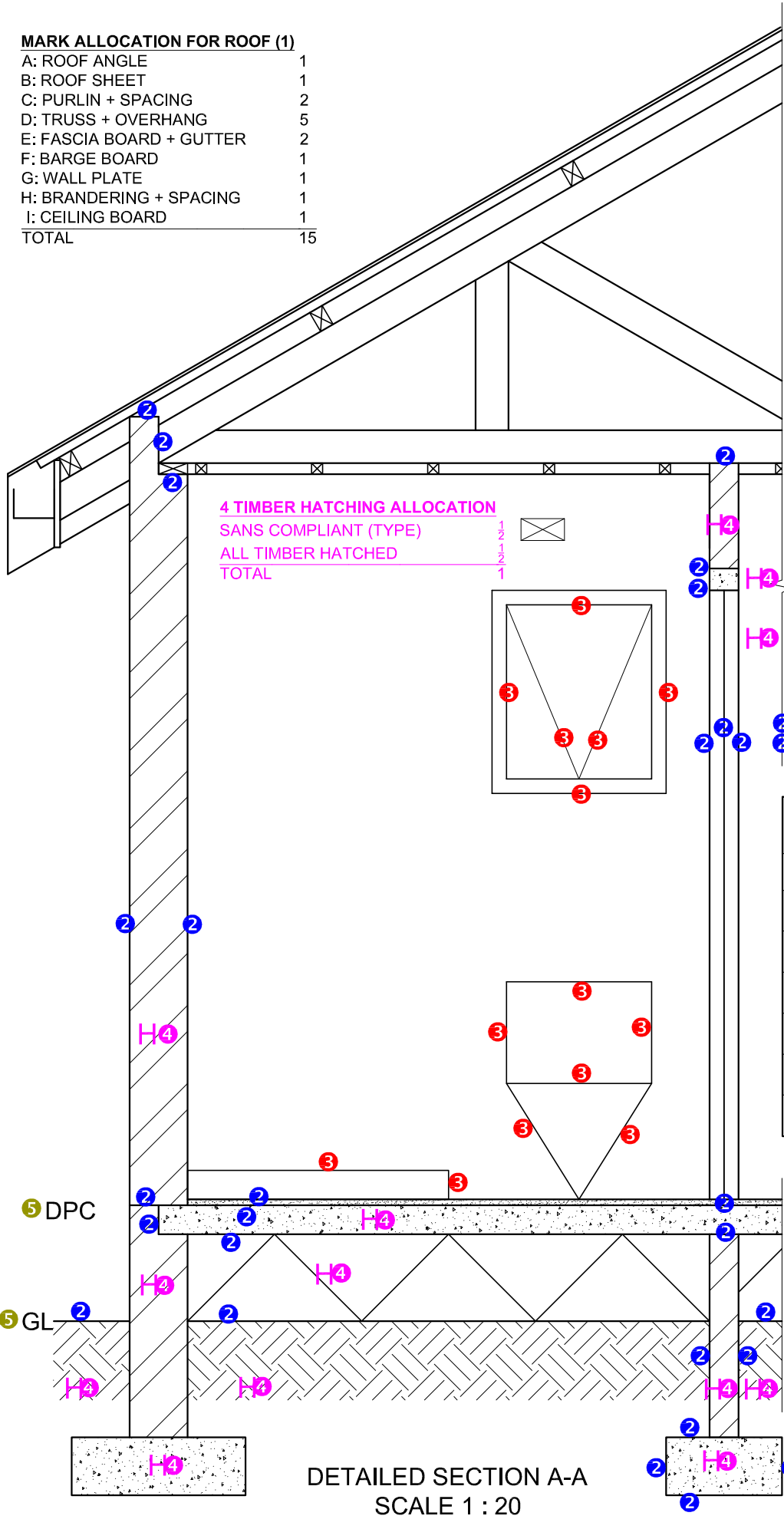


ASSESSMENT CRITERIA		
FLOOR PLAN		
		POSSIBLE
1	DOORS + WINDOWS	10
2	ELECTRICAL	6
3	FIXTURES	8
4	HATCHING	3
5	LABELS	3
SUBTOTAL		30

APPROVED
 PAPER 1 QUESTION 4
 GRADE 12
 SC/NSC 2019
 MARKING GUIDELINES

MARK ALLOCATION FOR ROOF (1)

A: ROOF ANGLE	1
B: ROOF SHEET	1
C: PURLIN + SPACING	2
D: TRUSS + OVERHANG	5
E: FASCIA BOARD + GUTTER	2
F: BARGE BOARD	1
G: WALL PLATE	1
H: BRANDERING + SPACING	1
I: CEILING BOARD	1
TOTAL	15



4 TIMBER HATCHING ALLOCATION
 SANS COMPLIANT (TYPE) 1
 ALL TIMBER HATCHED 2
 TOTAL 1

ASSESSMENT CRITERIA		
DETAILED SECTION		
1	ROOF DETAIL	15
2	FOUNDATION + WALL + DOOR	14 1/2
3	WC + SHOWER + WINDOW	7
4	HATCHING	7 1/2
5	LABELS	1
SUBTOTAL		45

DETAILED SECTION A-A
 SCALE 1 : 20

APPROVED
 PAPER 1 QUESTION 4
 GRADE 12
 SC/NSC 2019
 MARKING GUIDELINES